

# 用户使用手册

北京亿中邮信息技术有限公司

---

---





©



---

# I

I-1



I-1

---

## II

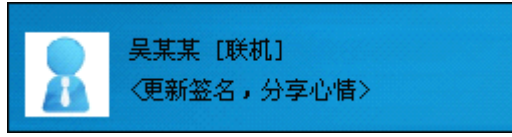
II-1



II-1

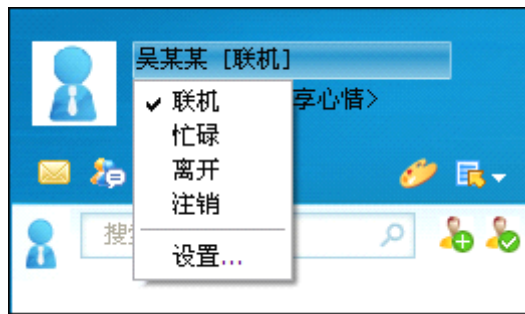
## III

III-1



III-1

III-2



III-2

## IV

IV-1



IV-1

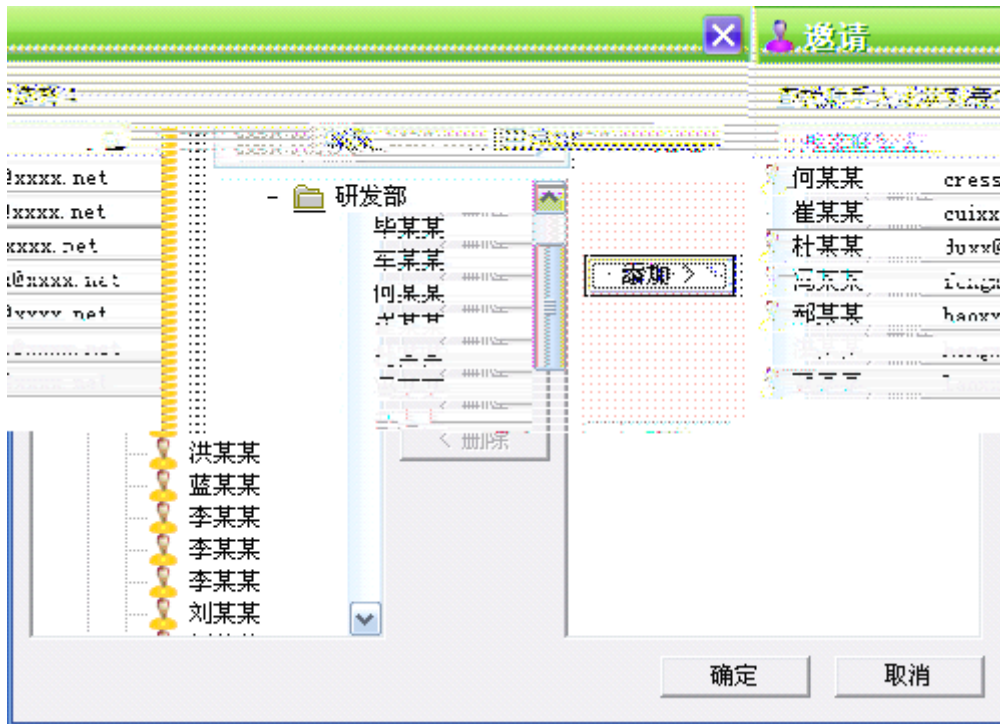
### IV.1 进入邮箱



## IV.2 创建多人会话



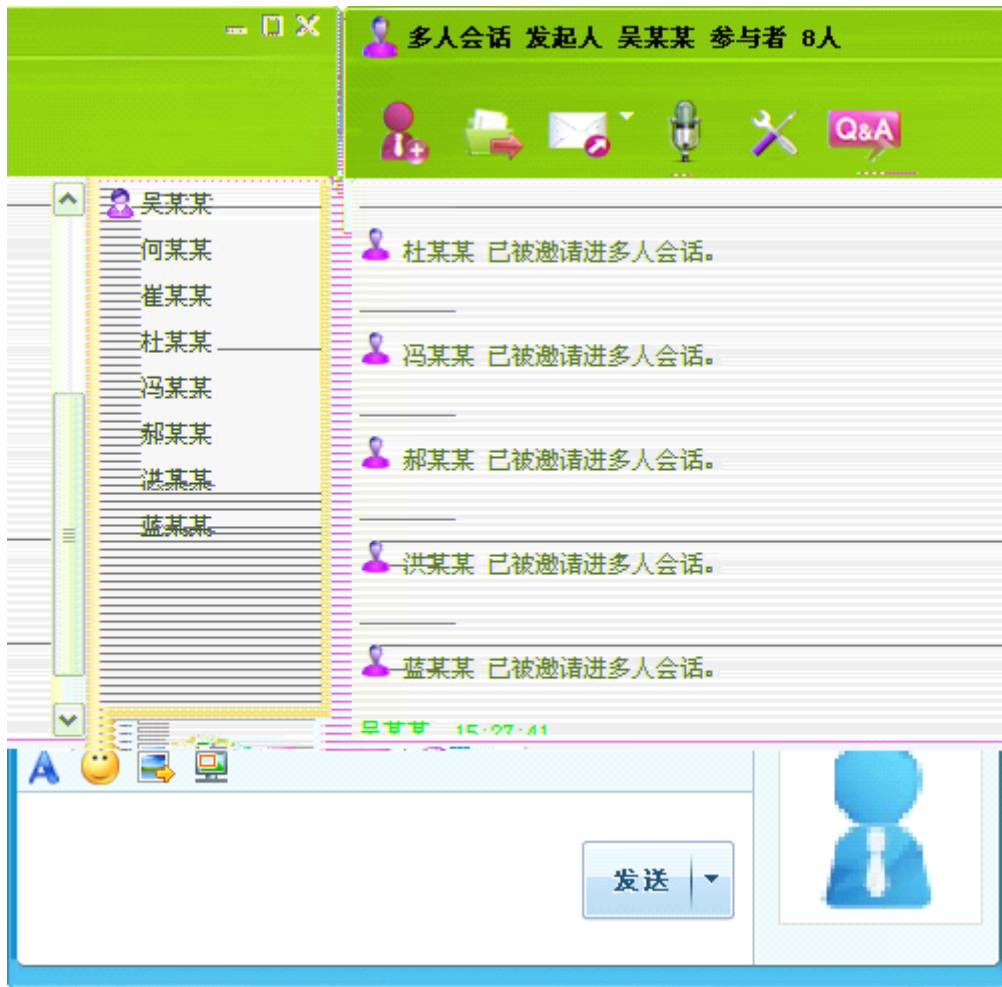
IV.2-1



IV.2-1

IV.2-2



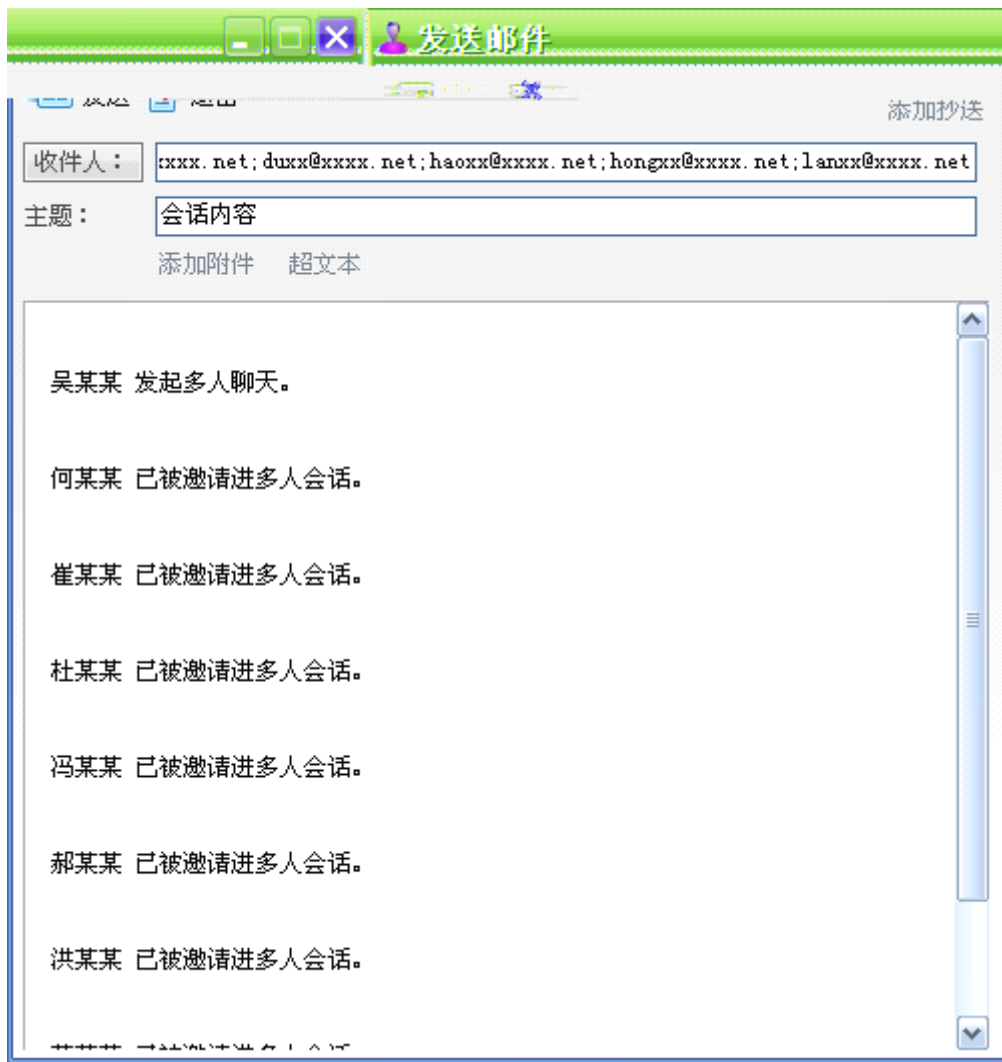


IV.2-2



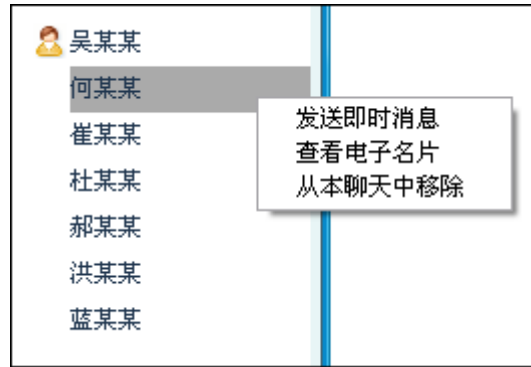
IV.2-3





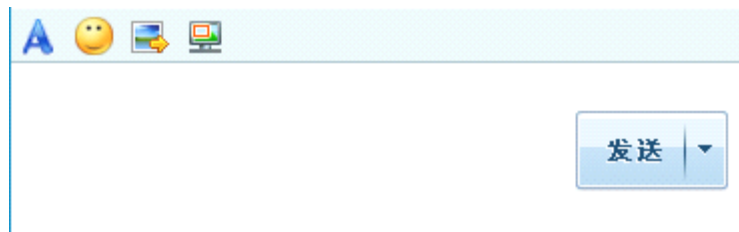
IV.2-3





IV.2-4

IV.2-5



IV.2-5



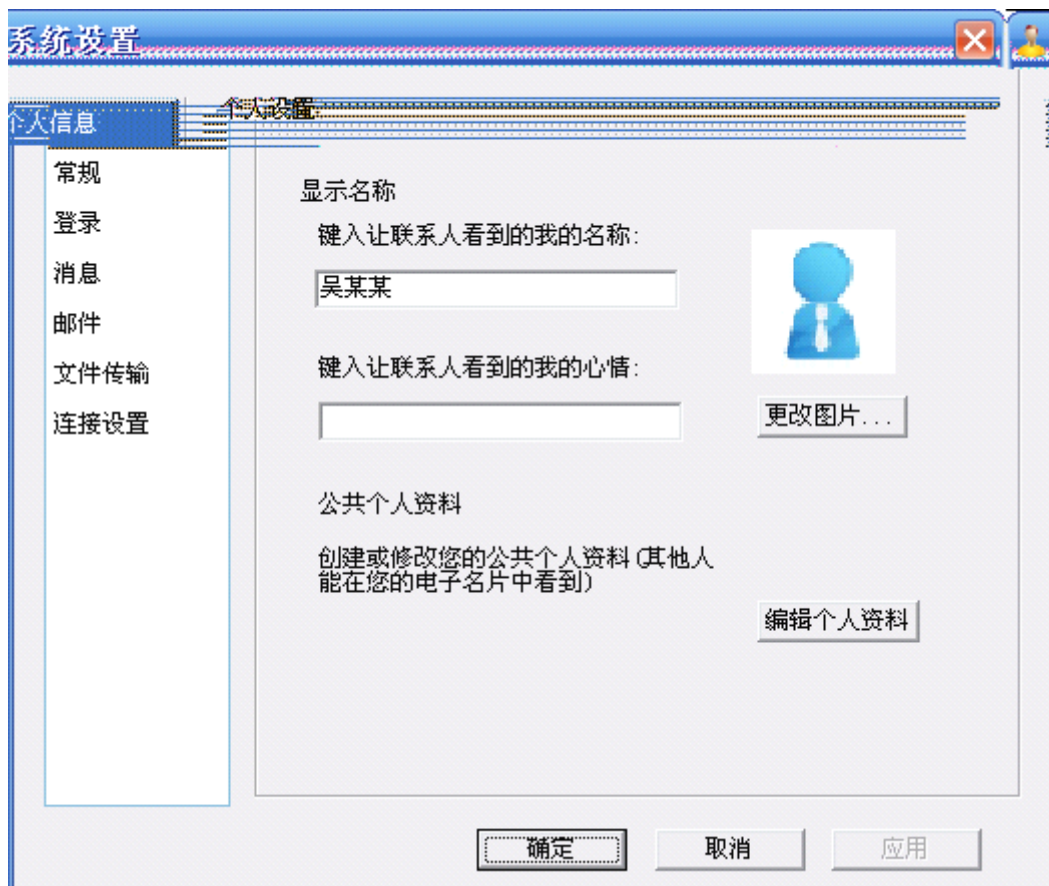


## IV.3 系统设置



1.

IV.3-1



IV.3-1

IV.3-2

公共个人资料

姓 名: 吴某某

部 门: 研发部

职 位: 测试工程师

电子邮件: xxx@xxxx.net

电 话: 5820xxxx-150

手 机: 139xxxxxxxx

我的名片预览:

吴某某

研发部 测试工程师

电邮: xxx@xxxx.net

电话: 5820xxxx-150

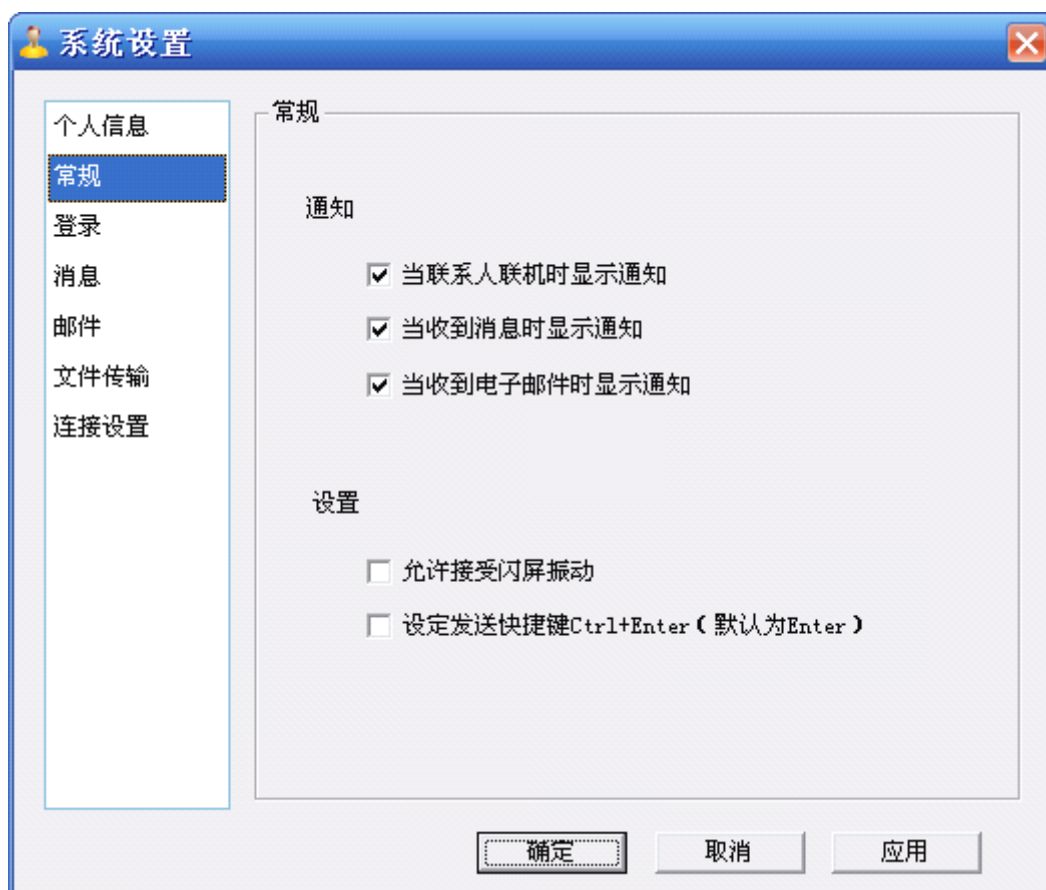
手机: 139xxxxxxxx

确定 取消

IV.3-2

2.

IV.3-3

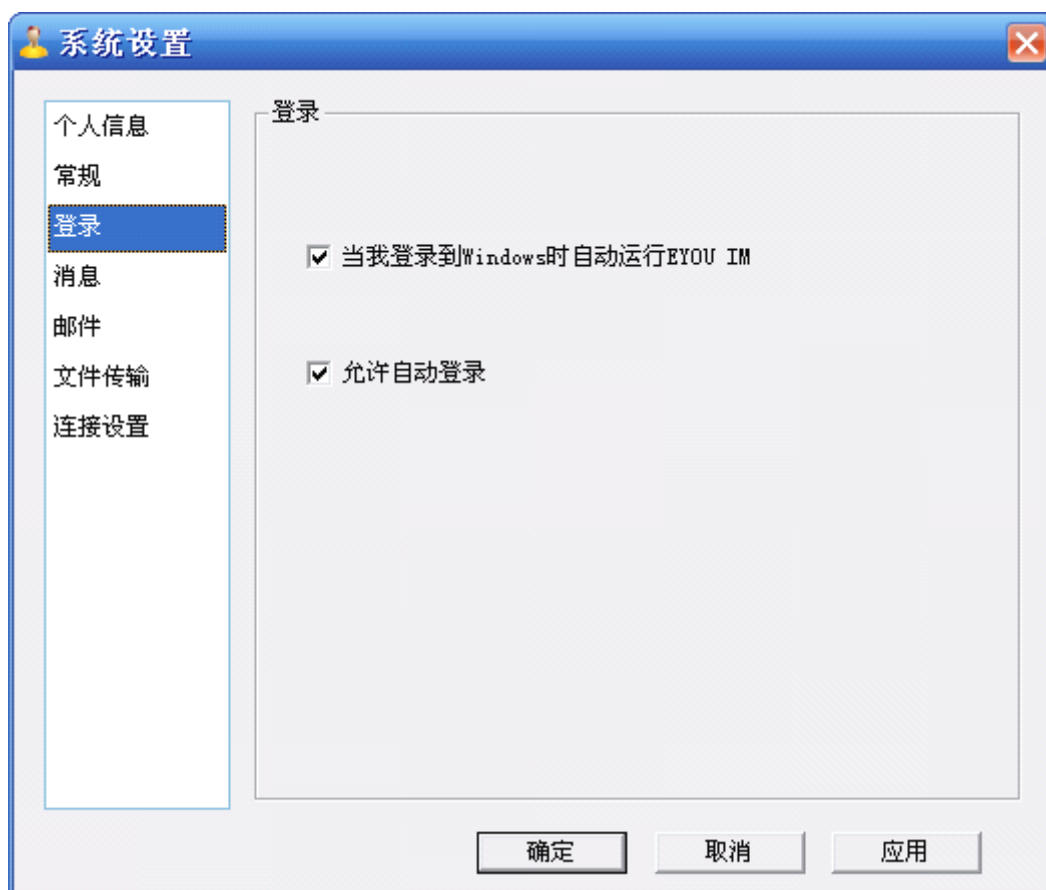


IV.3-3

3.

IV.3-4

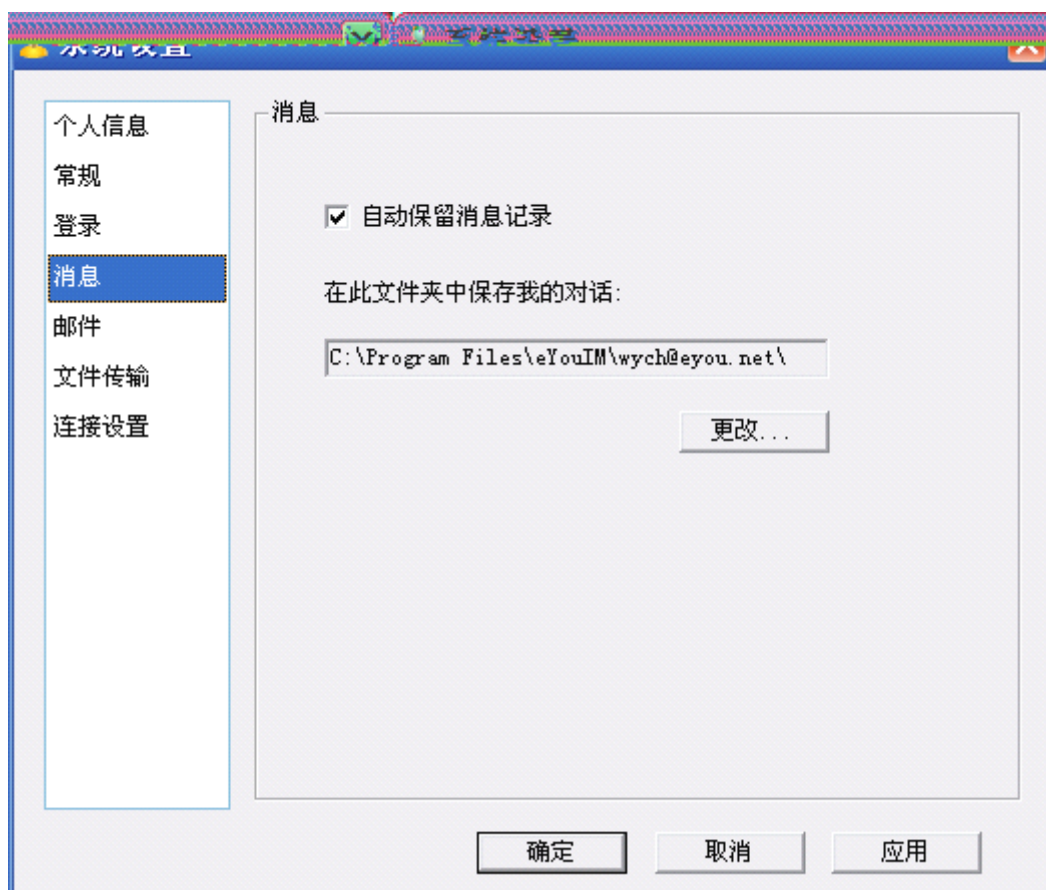




IV.3-4

4.

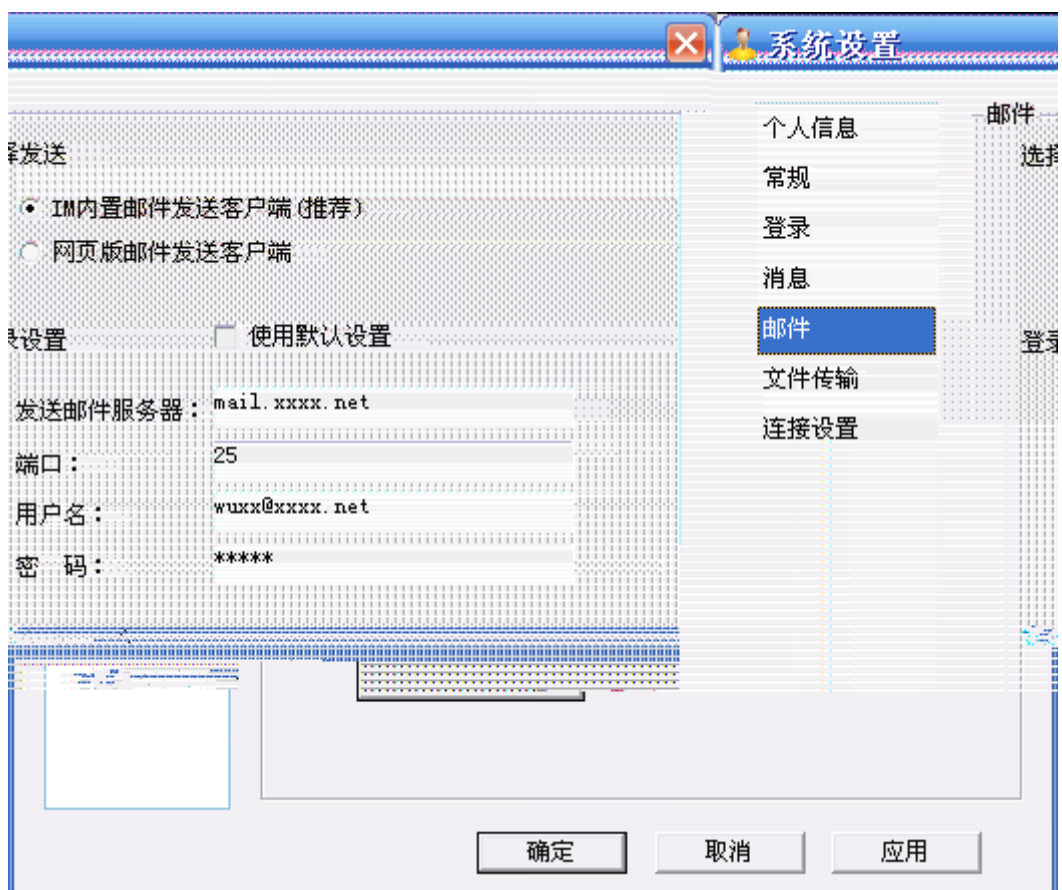
IV.3-5



IV.3-5

5.

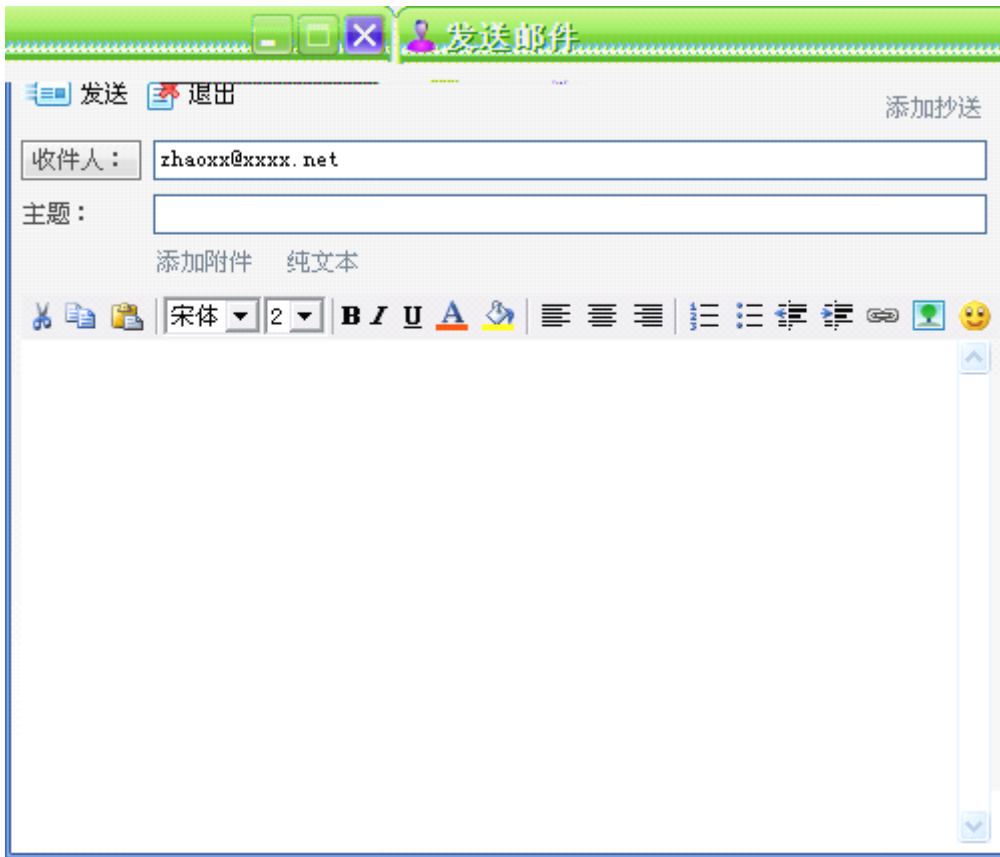
IV.3-6

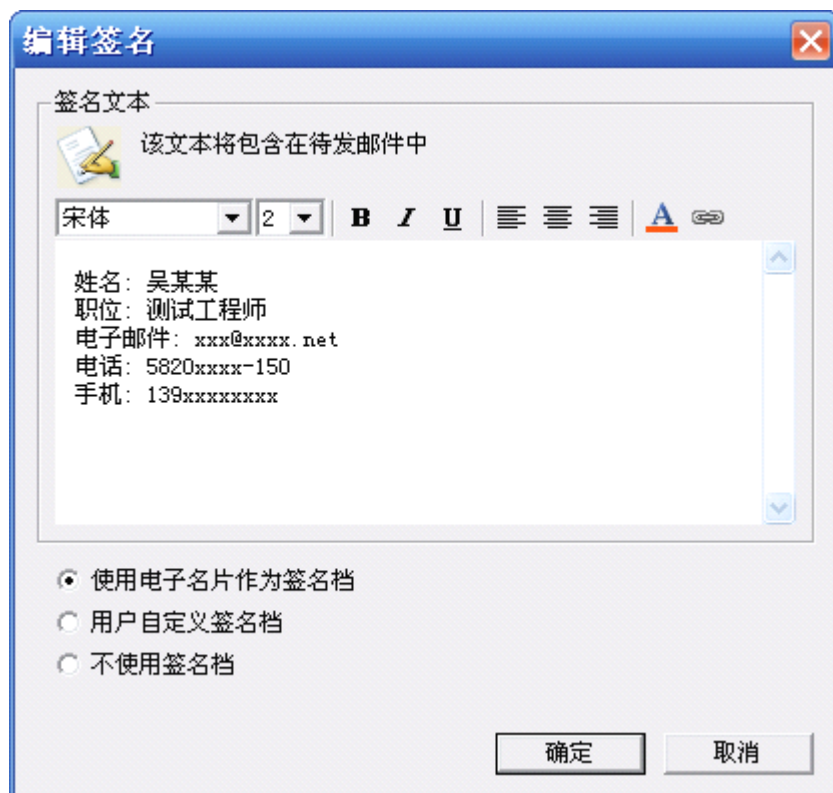


IV.3-6

IV.3-7



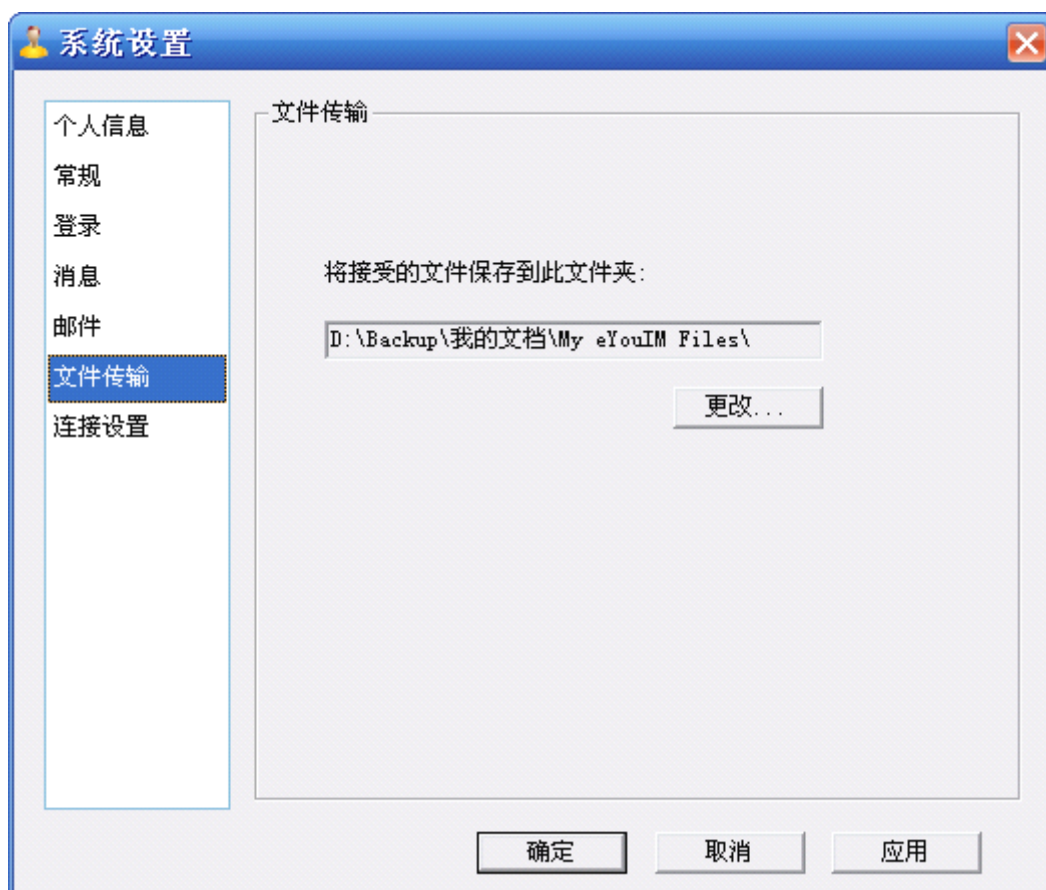




IV.3-8

6.

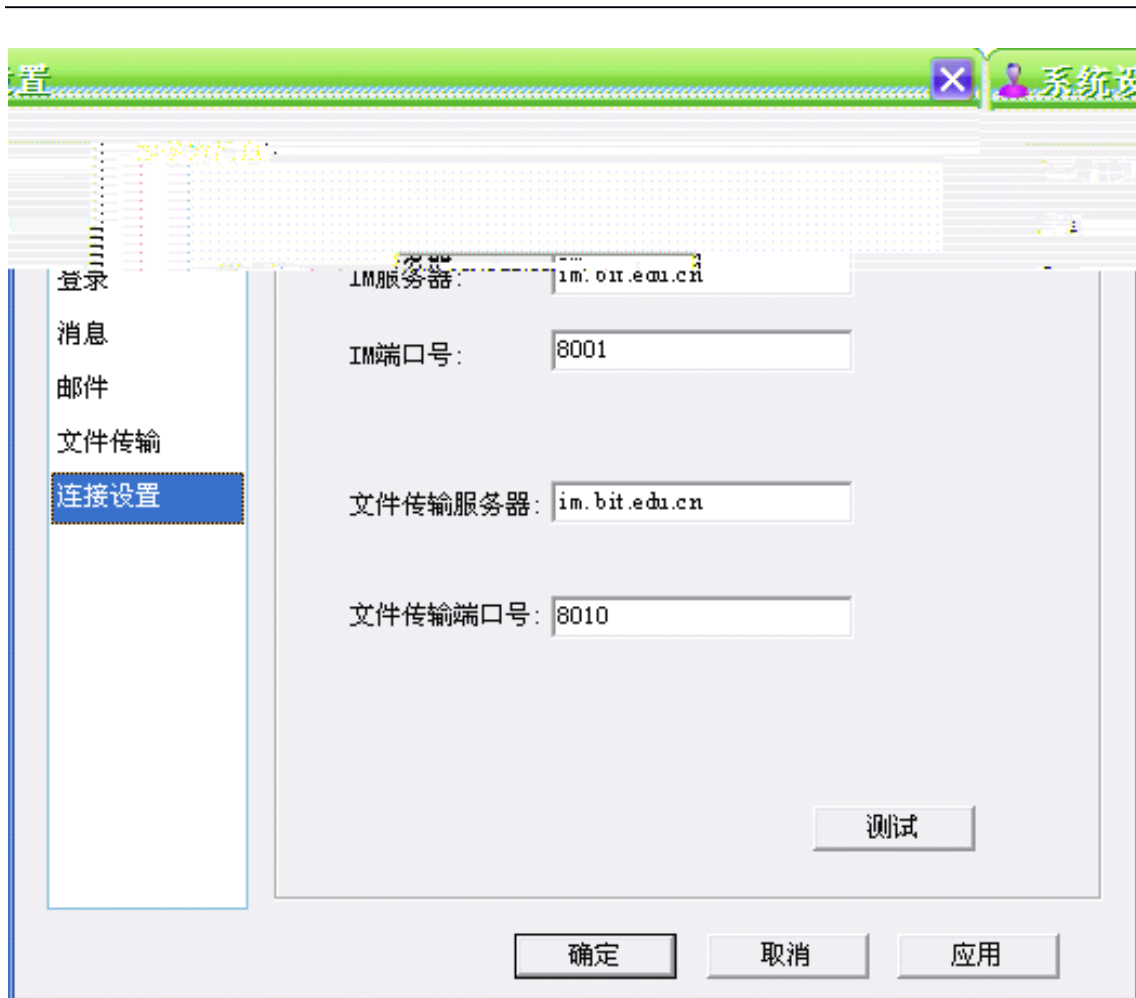
IV.3-9



IV.3-9

7.

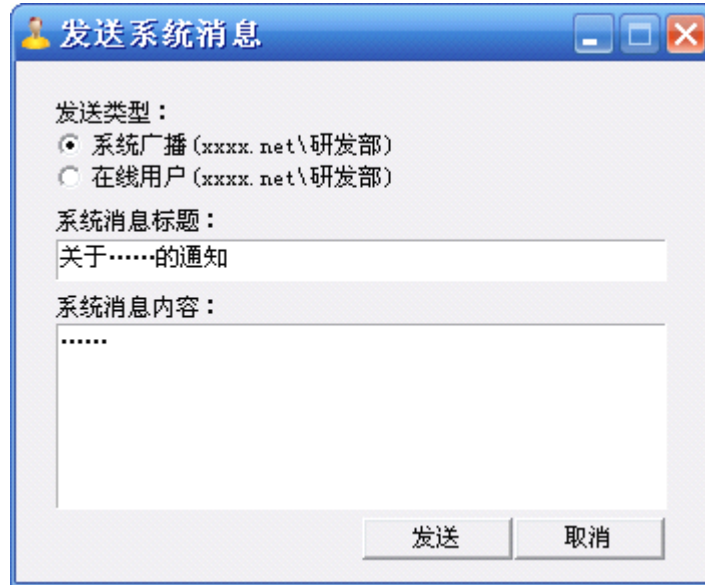
IV.3-10



IV.3-10

## IV.4 发送系统通知

IV.4-1



IV.4-1

## IV.5 更改外观

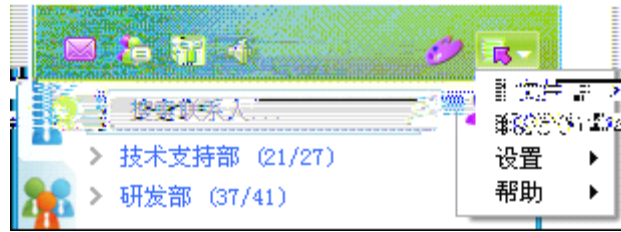
IV.5-1

IV.5-1

## IV.6 显示菜单

IV.6-1

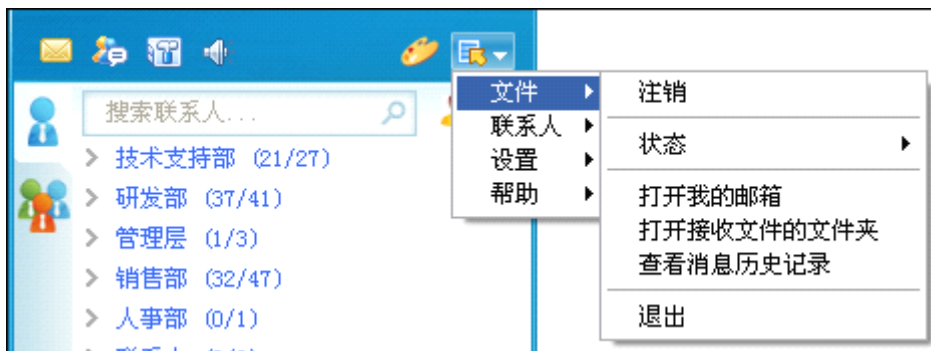
---



IV.6-1

## IV.6.1

IV.6-2



IV.6-2

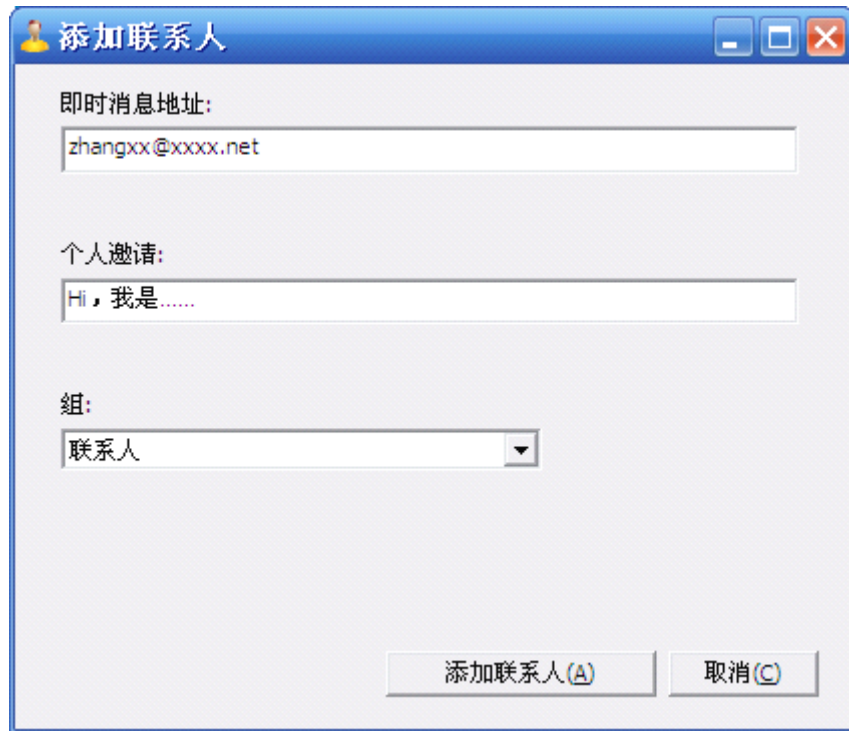
## IV.6.2

IV.6-3



IV.6-3

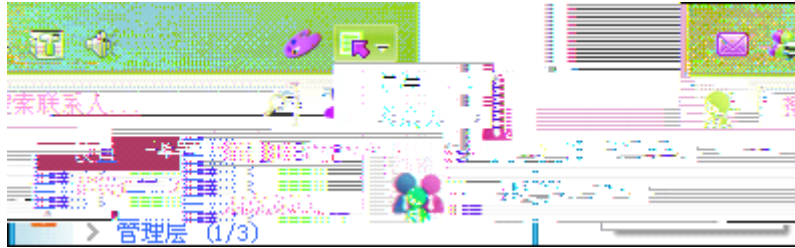
IV.6-4



IV.6-4

## IV.6.3

IV.6-5



IV.6-5

## IV.6.4

IV.6-6



IV.6-6

## V

V-1

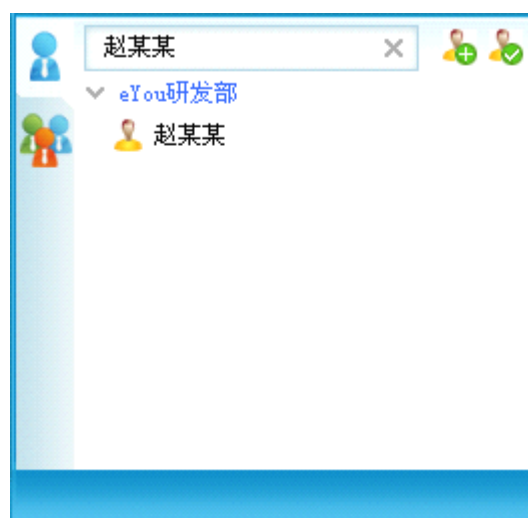




V-1

## V.1 搜索联系人

V.1-1



V.1-1

---

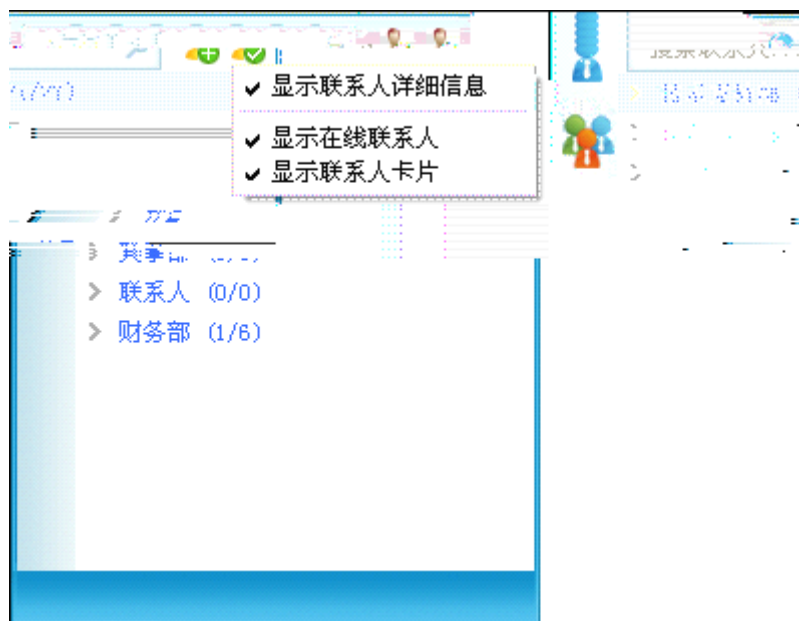
## V.2 添加联系人



## V.3 更改联系人显示方式

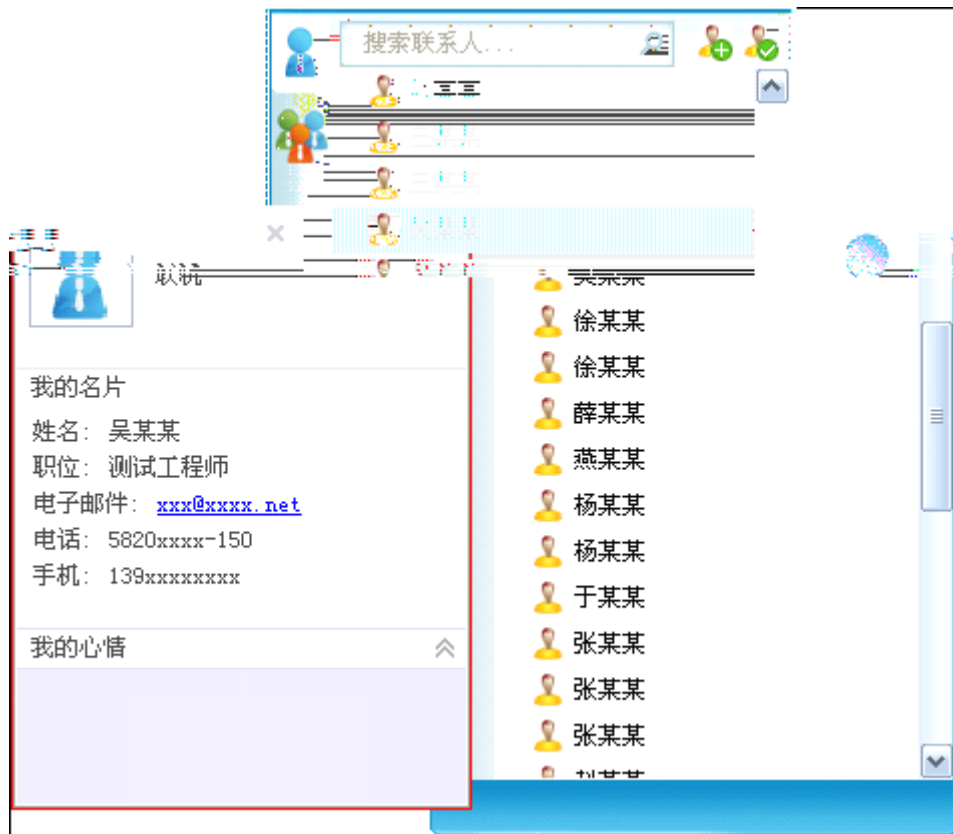


V.3-1



V.3-1

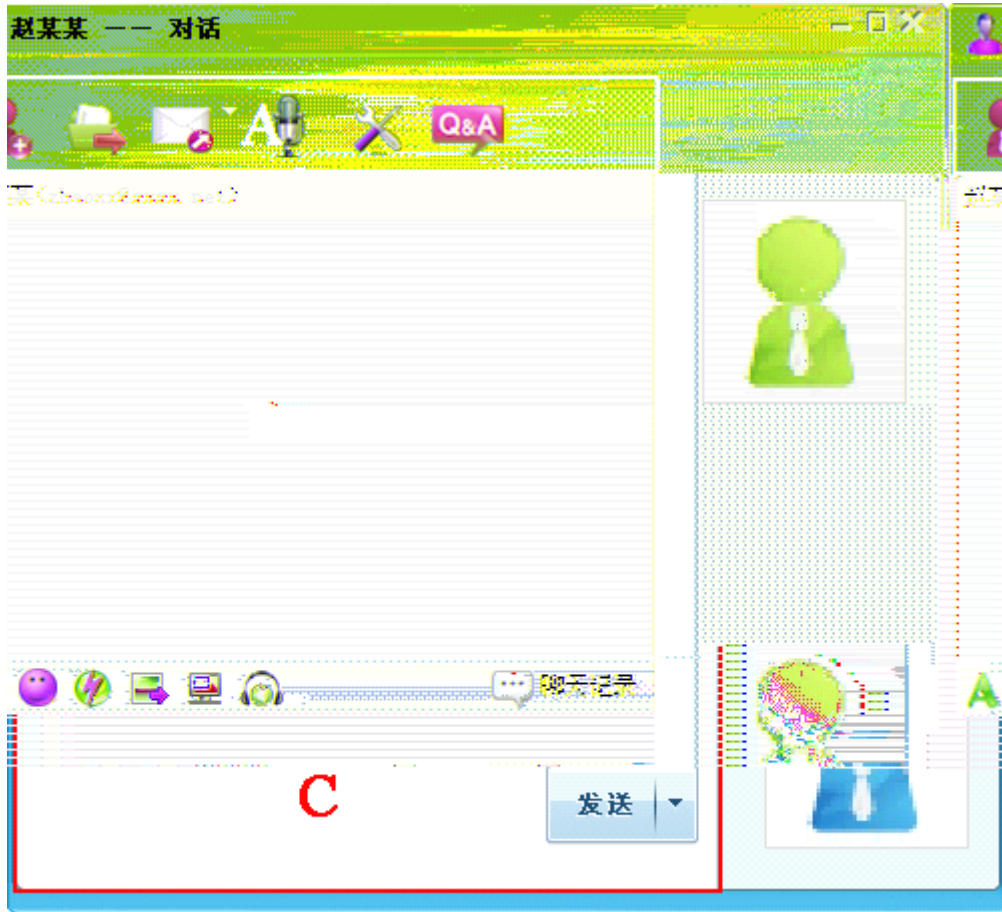
V.3-2



V.3-2

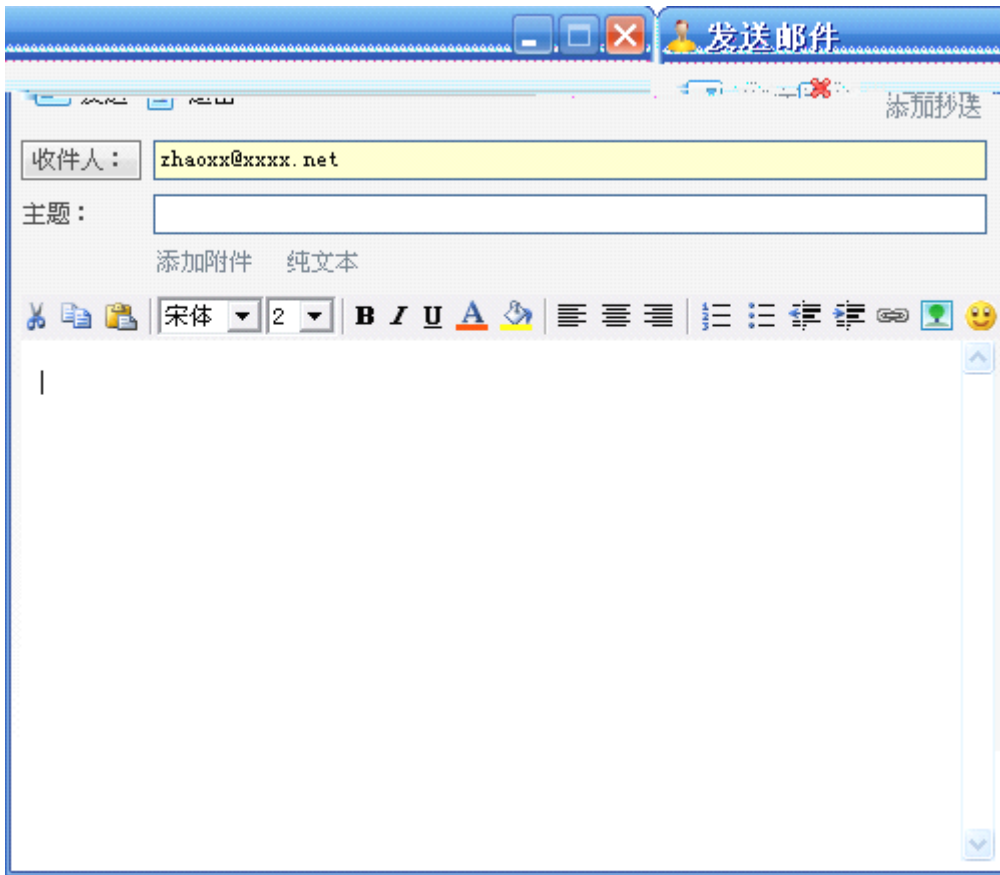
## V.4 单人会话

V.4-1



V.4-1

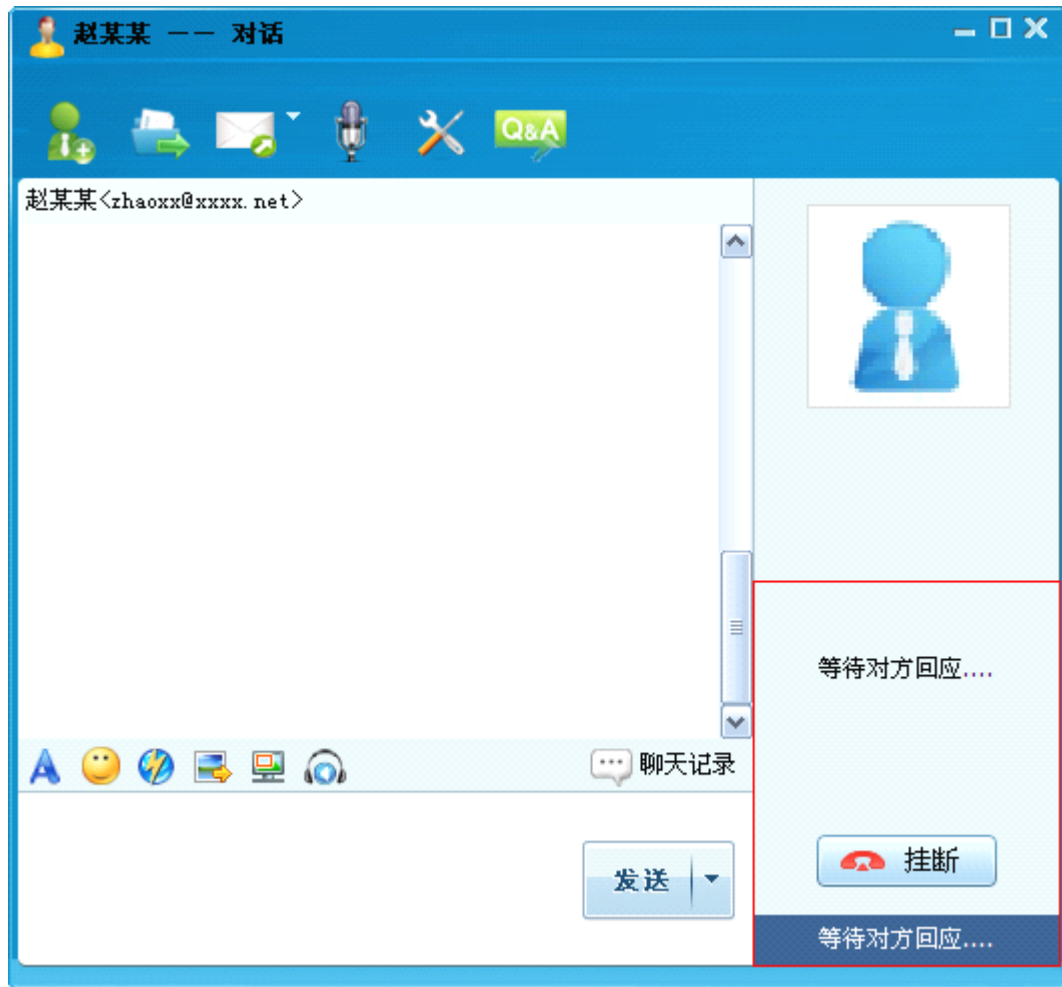
1.



V.4-2



V.4-3

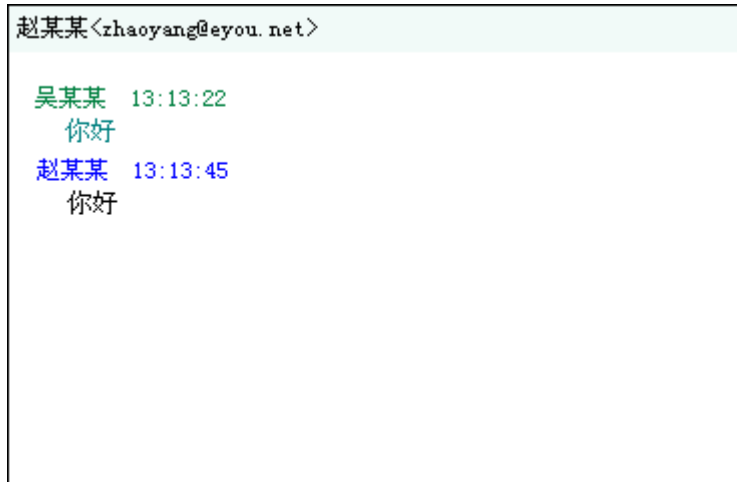


V.4-3



2.

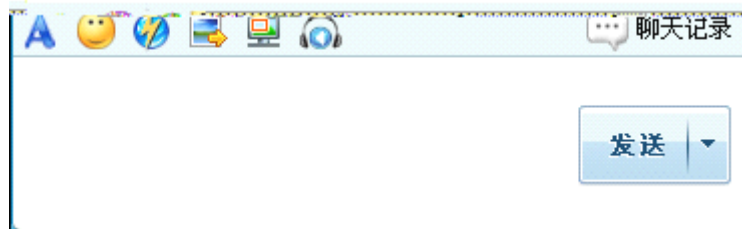
V.4-4



V.4-4

3.

V.4-5



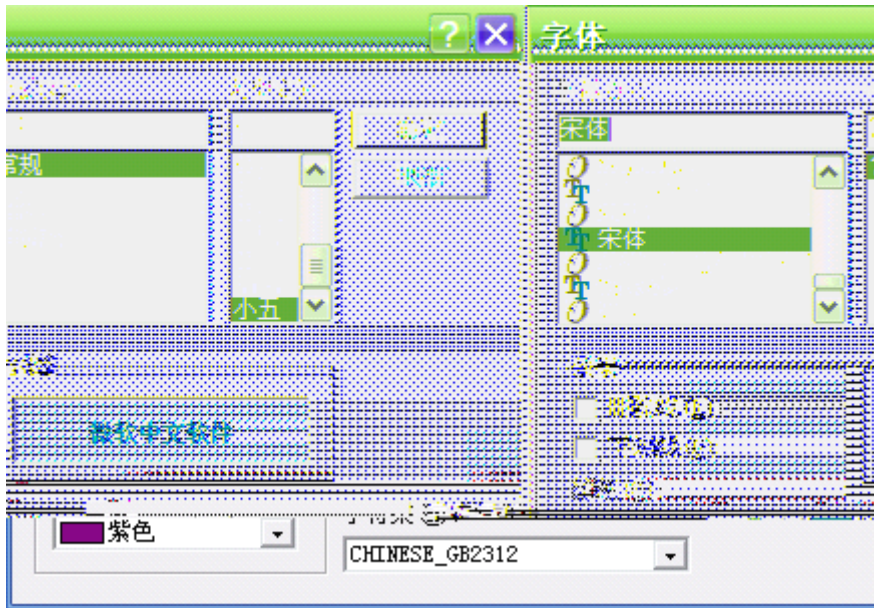
V.4-5

A

A

V.4-6





V.4-6



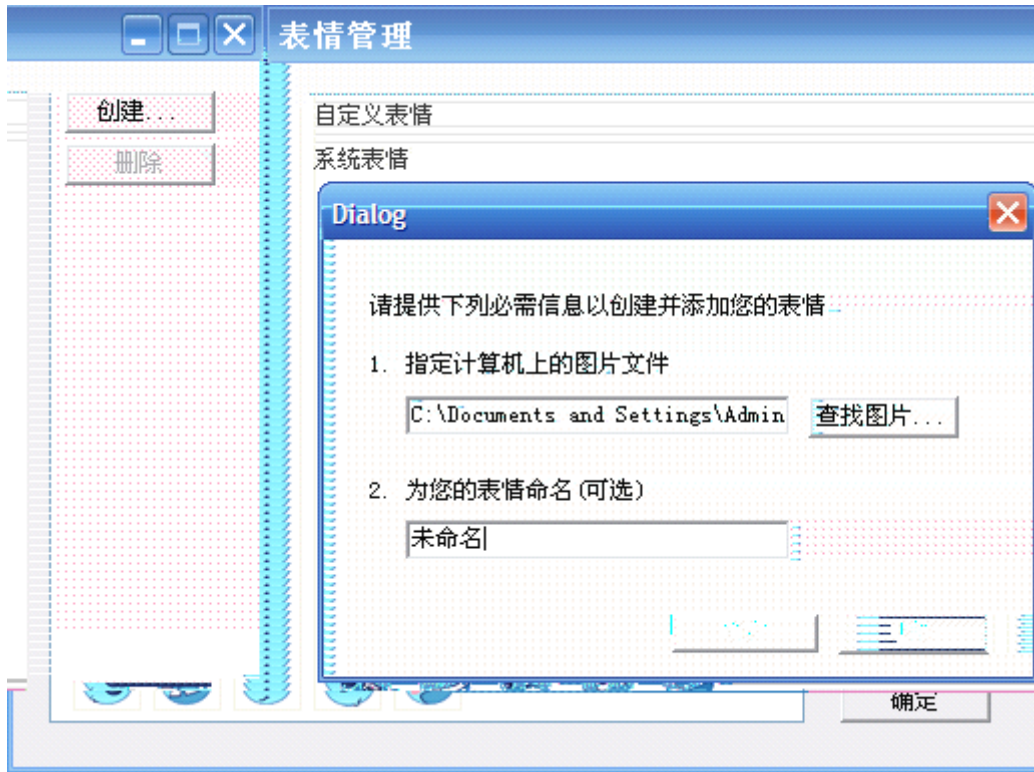
V.4-7



V.4-7

V.4-8



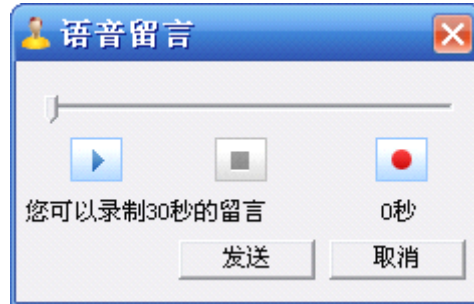


V.4-8





V.4-9



V.4-9



V.4-10

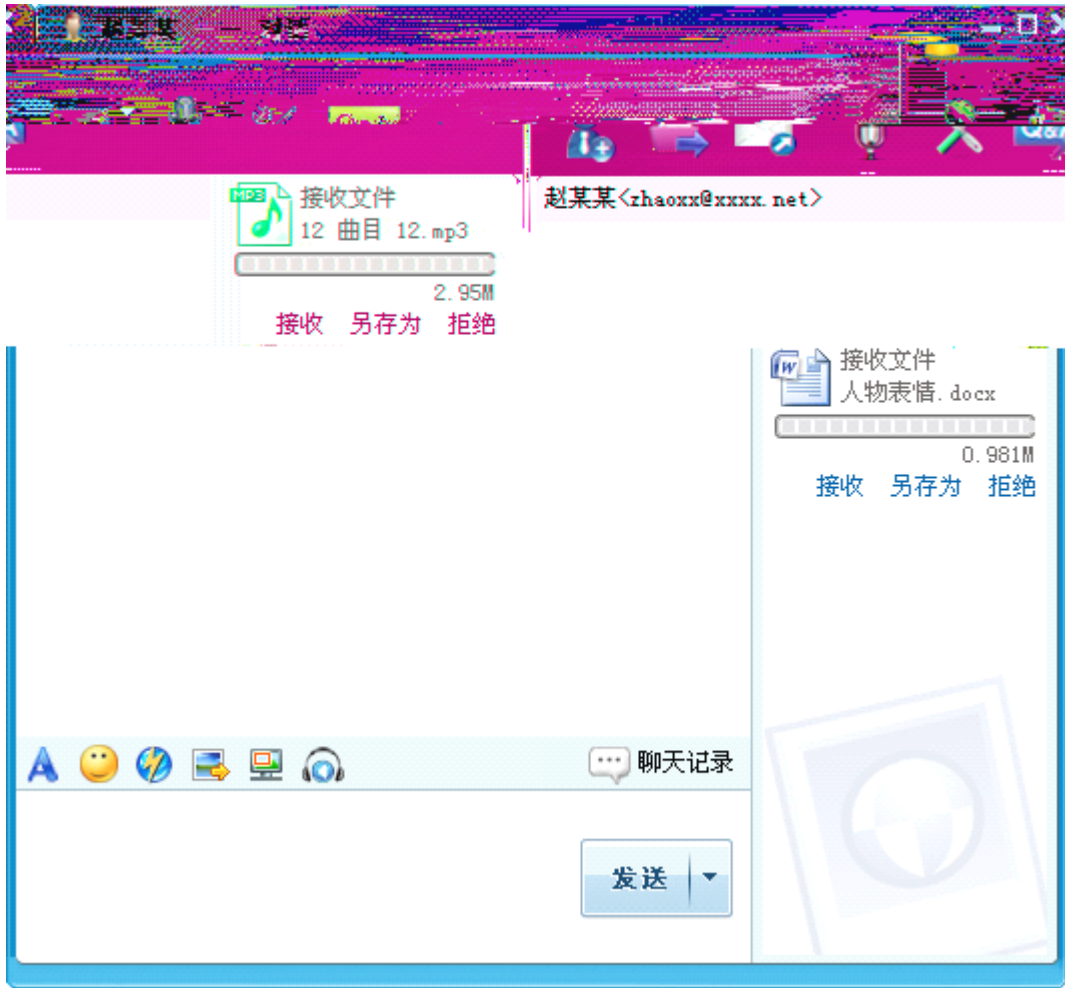


V.4-10

---

---





V.4-12

## V.5 右键功能

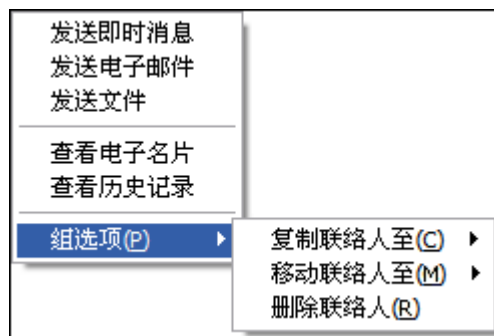
V.5-1



V.5-1

---

V.5-2

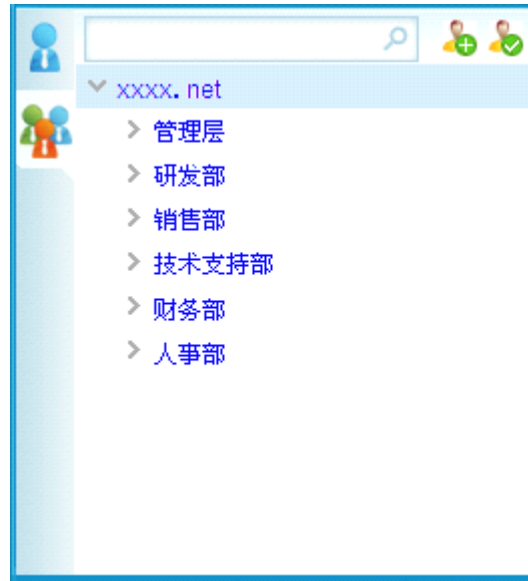


V.5-2

## V.6 组织架构

V.6-1

---



V.6-1